



The company to turn to



LRQ 0960929



Wrapped Metric Plain Bearings. PTFE U Type

Reference	I.D.	O.D.	Recommended Tolerances						Bearing Size when fitted		Standard Length Options					
	(mm)	Housing			Shaft			Bore		Tolerance +/- 0.25 mm						
		(mm)								(mm)						
TFP03 x L	3	4.5	H6	0	+0.006	h6	0	-0.008	3.000	3.048	3	4	5	6		
TFP04 x L	4	5.5	H6	0	+0.008	h6	0	-0.008	4.000	4.048	3	4	6	10		
TFP05 x L	5	7	H7	0	+0.015	f7	-0.010	-0.022	4.990	5.055	5	8	10			
TFP06 x L	6	8	H7	0	+0.015	f7	-0.010	-0.022	5.990	6.055	6	8	10			
TFP07 x L	7	9	H7	0	+0.015	f7	-0.013	-0.028	6.990	7.055	10					
TFP08 x L	8	10	H7	0	+0.015	f7	-0.013	-0.028	7.990	8.055	8	12				
TFP10 x L	10	12	H7	0	+0.018	f7	-0.013	-0.028	9.990	10.058	8	10	12	15	20	
TFP12 x L	12	14	H7	0	+0.018	f7	-0.016	-0.034	11.990	12.058	12	15	20	25		
TFP13 x L	13	15	H7	0	+0.018	f7	-0.016	-0.034	12.990	13.058	10	20				
TFP14 x L	14	16	H7	0	+0.018	f7	-0.016	-0.034	13.990	14.058	10	12	15	20	25	
TFP15 x L	15	17	H7	0	+0.018	f7	-0.016	-0.034	14.990	15.058	10	12	15	20	20	25
TFP16 x L	16	18	H7	0	+0.018	f7	-0.016	-0.034	15.990	16.058	10	12	15	20	25	
TFP17 x L	17	19	H7	0	+0.018	f7	-0.016	-0.034	16.990	17.061	15	20				
TFP18 x L	18	20	H7	0	+0.018	f7	-0.016	-0.034	17.990	18.061	15	20	25			
TFP20 x L	20	22	H7	0	+0.021	f7	-0.025	-0.046	19.990	20.061	10					
TFP20 x L	20	23	H7	0	+0.021	f7	-0.025	-0.046	19.990	20.071	10	15	20	25	30	
TFP22 x L	22	25	H7	0	+0.021	f7	-0.025	-0.046	21.990	22.071	15	20	25	30		
TFP24 x L	24	27	H7	0	+0.021	f7	-0.025	-0.046	23.990	24.071	20	25	30			
TFP25 x L	25	28	H7	0	+0.021	f7	-0.025	-0.046	24.990	25.071	12	15	20	25	30	50
TFP28 x L	28	32	H7	0	+0.025	f7	-0.025	-0.050	27.990	28.085	20	25	30			
TFP30 x L	30	34	H7	0	+0.025	f7	-0.025	-0.050	29.990	30.085	15	20	25	30	40	
TFP32 x L	32	36	H7	0	+0.025	f7	-0.025	-0.050	31.990	32.085	20	30	40			
TFP35 x L	35	39	H7	0	+0.025	f7	-0.025	-0.050	34.990	35.085	20	30	35	40	50	
TFP40 x L	40	44	H7	0	+0.025	f7	-0.025	-0.050	39.990	40.085	20	30	40	50		
TFP45 x L	45	50	H7	0	+0.025	f7	-0.025	-0.050	44.990	45.105	20	30	40	45	50	
TFP50 x L	50	55	H7	0	+0.030	f7	-0.025	-0.050	49.990	50.110	20	30	40	50	60	
TFP55 x L	55	60	H7	0	+0.030	f7	-0.030	-0.060	54.990	55.110	20	25	30	40	50	60
TFP60 x L	60	65	H7	0	+0.030	f7	-0.030	-0.060	59.990	60.110	20	30	40	60	70	
TFP65 x L	65	70	H7	0	+0.030	f7	-0.030	-0.060	64.990	65.110	30	50	60	70		
TFP70 x L	70	75	H7	0	+0.030	f7	-0.030	-0.060	69.990	70.110	70					
TFP75 x L	75	80	H7	0	+0.030	f7	-0.030	-0.060	74.990	75.110	40	50	60	80		
TFP80 x L	80	85	H7	0	+0.035	h8	-0.030	-0.060	80.020	80.155	60	100				
TFP85 x L	85	90	H7	0	+0.035	h8	-0.036	-0.071	85.020	85.155	60	100				
TFP90 x L	90	95	H7	0	+0.035	h8	-0.036	-0.071	90.020	90.155	60	100				
TFP95 x L	95	100	H7	0	+0.035	h8	-0.036	-0.071	95.020	95.155	60	100				
TFP100 x L	100	105	H7	0	+0.035	h8	-0.036	-0.071	100.020	100.155	60	70	80	115		
TFP105 x L	105	110	H7	0	+0.035	h8	-0.036	-0.071	105.020	105.155	60	115				
TFP110 x L	110	115	H7	0	+0.035	h8	-0.036	-0.071	110.020	110.155	60	115				
TFP115 x L	115	120	H7	0	+0.035	h8	-0.036	-0.071	115.020	115.155	50	60	70			
TFP120 x L	120	125	H7	0	+0.040	h8	-0.036	-0.071	120.070	120.210	60	100				
TFP125 x L	125	130	H7	0	+0.040	h8	-0.043	-0.083	125.070	125.210	60	100				
TFP130 x L	130	135	H7	0	+0.040	h8	-0.043	-0.083	130.070	130.210	60	100				
TFP135 x L	135	140	H7	0	+0.040	h8	-0.043	-0.083	135.070	135.210	60	100				
TFP140 x L	140	145	H7	0	+0.040	h8	-0.043	-0.083	140.070	140.210	60	100				
TFP145 x L	145	150	H7	0	+0.040	h8	-0.043	-0.083	145.070	145.210	60	100				
TFP150 x L	150	155	H7	0	+0.040	h8	-0.043	-0.083	150.070	150.210	100					
TFP155 x L	155	160	H7	0	+0.040	h8	-0.043	-0.083	155.070	155.210	60	100				
TFP160 x L	160	165	H7	0	+0.040	h8	-0.043	-0.083	160.070	160.210	60	100				
TFP165 x L	165	170	H7	0	+0.040	h8	-0.043	-0.083	165.070	165.210	60	100				
TFP170 x L	170	175	H7	0	+0.040	h8	-0.043	-0.083	170.070	170.210	60	100				
TFP175 x L	175	180	H7	0	+0.040	h8	-0.043	-0.083	175.070	175.210	60	100				
TFP180 x L	180	185	H7	0	+0.046	h8	-0.043	-0.083	180.070	180.216	60	100				
TFP200 x L	200	205	H7	0	+0.046	h8	-0.050	-0.096	200.070	200.216	100					
TFP220 x L	220	225	H7	0	+0.046	h8	-0.050	-0.096	220.070	220.216	60	100				
TFP250 x L	250	255	H7	0	+0.052	h8	-0.050	-0.096	250.070	250.222	60	100				
TFP280 x L	280	285	H7	0	+0.052	h8	-0.056	-0.108	280.070	280.222	60	100				
TFP300 x L	300	305	H7	0	+0.052	h8	-0.056	-0.108	300.070	300.222	60	100				

Non-standard lengths can be supplied. If the size you require is not listed please contact our sales dept. We also offer a specialised machining service for low volume non-standard sizes and tolerances.

Bowman International Limited reserve the right to change specifications without prior notice E & OE

BOWMAN INTERNATIONAL LIMITED

10 Isis Court, Wyndyke Furlong, Abingdon Business Park, Abingdon, Oxfordshire, OX14 1DZ England

Tel +44 (0)1235 815816 Fax +44 (0)1235 811234 E-mail enquiries@bowman.co.uk Website www.bowman.co.uk



The company to turn to



LRQ 0960929



Wrapped Metric Flanged Bearings. PTFE U Type

Reference	I.D. (mm)	O.D. (mm)	Recommended Tolerances			Bearing Size when fitted		Flange		Standard Length Options				
			Housing		Shaft	Bore (mm)		Diameter (mm)		Tolerance +/- 0.25mm (mm)				
TFF06 x L	6	8	0	+0.015	-0.010	-0.022	5.990	6.055	11.5	12.5	4	7	8	
TFF08 x L	8	10	0	+0.015	-0.013	-0.028	7.990	8.055	14.5	15.5	5.5	7.5	9.5	
TFF10 x L	10	12	0	+0.018	-0.013	-0.028	9.990	10.058	17.5	18.5	7	9	12	17
TFF12 x L	12	14	0	+0.018	-0.014	-0.034	11.990	12.058	19.5	20.5	7	9	12	17
TFF14 x L	14	16	0	+0.018	-0.014	-0.034	13.990	14.058	21.5	22.5	12	17		
TFF15 x L	15	17	0	+0.018	-0.014	-0.034	14.990	15.058	22.5	23.5	9	12	17	
TFF16 x L	16	18	0	+0.018	-0.014	-0.034	15.990	16.058	23.5	24.5	12	17		
TFF18 x L	18	20	0	+0.021	-0.014	-0.034	17.990	18.061	25.5	26.5	12	17	22	
TFF20 x L	20	23	0	+0.021	-0.020	-0.041	19.990	20.071	29.5	30.5	11.5	16.5	21.5	
TFF25 x L	25	28	0	+0.021	-0.020	-0.041	24.990	25.071	34.5	35.5	11.5	16.5	21.5	
TFF30 x L	30	34	0	+0.025	-0.020	-0.041	29.990	30.085	41.5	42.5	16	26		
TFF35 x L	35	39	0	+0.025	-0.025	-0.050	34.990	35.085	46.5	47.5	16	26		
TFF40 x L	40	44	0	+0.025	-0.025	-0.050	39.990	40.085	52.5	53.5	16	26		
TFF45 x L	45	50	0	+0.025	-0.025	-0.050	44.990	45.105	57.5	58.5	16	26		

Non-standard lengths can be supplied. If the size you require is not listed please contact our sales dept. We also offer a specialised machining service for low volume non-standard sizes and tolerances.

Bowman International Limited reserve the right to change specifications without prior notice E & OE



Strip. PTFE U Type

Reference	Strip Sizes			
	Length	Width	Thickness	
			(mm)	
TFS07150	500	150	0.704	0.744
TFS10200	500	215	0.950	0.990
TFS15240	500	245	1.470	1.510
TFS20240	500	245	1.960	2.000
TFS25240	500	245	2.460	2.500
TFS30240	500	245	3.020	3.060



Non-standard lengths can be supplied. If the size you require is not listed please contact our sales dept. We also offer a specialised machining service for low volume non-standard sizes and tolerances.

Bowman International Limited reserve the right to change specifications without prior notice E & OE



Washers. Metric. PTFE U Type

Reference	I.D. (mm)	O.D. (mm)	Washer Sizes						Dowell hole		Dowell hole	
			Bore (mm)		O.D. (mm)	Thickness		Diameter (mm)		PCD (mm)		
TFW10	10	20	10.00	10.25	19.75	20.00	1.45	1.50	no hole	17.88	18.12	
TFW12	12	24	12.00	12.25	23.75	24.00	1.45	1.50	1.625	1.875	17.88	18.12
TFW14	14	26	14.00	14.25	25.75	26.00	1.45	1.50	2.125	2.375	19.88	20.12
TFW16	16	30	16.00	16.25	29.75	30.00	1.45	1.50	2.125	2.375	21.88	22.12
TFW18	18	32	18.00	18.25	31.75	32.00	1.45	1.50	2.125	2.375	24.88	25.12
TFW20	20	36	20.00	20.25	35.75	36.00	1.45	1.50	3.125	3.375	27.88	28.12
TFW22	22	38	22.00	22.25	37.75	38.00	1.45	1.50	3.125	3.375	29.88	30.12
TFW24	24	42	24.00	24.25	41.75	42.00	1.45	1.50	3.125	3.375	32.88	33.12
TFW26	26	44	26.00	26.25	43.75	44.00	1.45	1.50	3.125	3.375	34.88	35.12
TFW28	28	48	28.00	28.25	47.75	48.00	1.45	1.50	4.125	4.375	37.88	38.12
TFW32	32	54	32.00	32.25	53.75	54.00	1.45	1.50	4.125	4.375	42.88	43.12
TFW38	38	62	38.00	38.25	61.75	62.00	1.45	1.50	4.125	4.375	49.88	50.12
TFW42	42	66	42.00	42.25	65.75	66.00	1.45	1.50	4.125	4.375	53.88	54.12
TFW48	48	74	48.00	48.25	73.75	74.00	1.95	2.00	4.125	4.375	60.88	61.12
TFW52	52	78	52.00	52.25	77.75	78.00	1.95	2.00	4.125	4.375	64.88	65.12
TFW62	62	78	52.00	52.25	77.75	78.00	1.95	2.00	4.125	4.375	64.88	65.12



Non-standard lengths can be supplied. If the size you require is not listed please contact our sales dept. We also offer a specialised machining service for low volume non-standard sizes and tolerances.

Bowman International Limited reserve the right to change specifications without prior notice E & OE

BOWMAN INTERNATIONAL LIMITED

10 Isis Court, Wyndyke Furlong, Abingdon Business Park, Abingdon, Oxfordshire, OX14 1DZ England
Tel +44 (0)1235 815816 Fax +44 (0)1235 811234 E-mail enquiries@bowman.co.uk Website www.bowman.co.uk



The company to turn to



LRQ 0960929



Wrapped Metric Plain Bearings. Acetal X Type

Reference	I.D.	O.D.	Recommended Tolerances				Bearing Size when fitted		Oil hole	Standard Length Options					
			Housing		Shaft		Bore		Diameter	Tolerance +/- 0.25mm					
	(mm)	(mm)	(mm)				(mm)		(mm)	(mm)					
TPX08 x L	8	10	0	+0.015	0	-0.022	8.040	8.107	no hole	8	10	12			
TPX10 x L	10	12	0	+0.018	0	-0.022	10.040	10.110	4	10	12	15	20		
TPX12 x L	12	14	0	+0.018	0	-0.027	12.040	12.110	4	10	12	15	20	25	
TPX14 x L	14	16	0	+0.018	0	-0.027	14.040	14.011	4	15	20	25			
TPX15 x L	15	17	0	+0.018	0	-0.027	15.040	15.108	4	10	12	15	25		
TPX16 x L	16	18	0	+0.018	0	-0.027	16.040	16.110	4	15	20	25			
TPX18 x L	18	20	0	+0.021	0	-0.027	18.040	18.111	4	15	20	25			
TPX20 x L	20	23	0	+0.021	0	-0.033	20.050	20.131	4	10	15	20	25	30	
TPX22 x L	22	25	0	+0.021	0	-0.033	22.050	22.131	6	15	20	25	30		
TPX24 x L	24	27	0	+0.021	0	-0.033	24.050	24.131	6	15	20	25	30		
TPX25 x L	25	28	0	+0.021	0	-0.033	25.050	25.131	6	15	20	25	30		
TPX28 x L	28	32	0	+0.025	0	-0.033	28.060	28.155	6	20	25	30			
TPX30 x L	30	34	0	+0.025	0	-0.033	30.060	30.155	6	20	30	40			
TPX32 x L	32	36	0	+0.025	0	-0.039	32.060	32.155	6	20	30	35	40		
TPX35 x L	35	39	0	+0.025	0	-0.039	35.060	35.155	6	20	30	35	50		
TPX40 x L	40	44	0	+0.025	0	-0.039	40.060	40.155	8	20	30	40	50		
TPX45 x L	45	50	0	+0.025	0	-0.039	45.080	45.195	8	20	30	40	45	50	
TPX50 x L	50	55	0	+0.030	0	-0.039	50.080	50.200	8	40	50	60			
TPX55 x L	55	60	0	+0.030	0	-0.046	55.080	55.200	8	20	25	30	40	50	60
TPX60 x L	60	65	0	+0.030	0	-0.046	60.080	60.200	8	30	40	60	70		
TPX65 x L	65	70	0	+0.030	0	-0.046	65.100	65.262	8	40	50	60	70		
TPX70 x L	70	75	0	+0.030	0	-0.046	70.100	70.262	8	25	40	50	65	70	80
TPX75 x L	75	80	0	+0.030	0	-0.046	75.100	75.262	9.5	40	60	80			
TPX80 x L	80	85	0	+0.035	0	-0.046	80.100	80.267	9.5	40	60	80	100		
TPX85 x L	85	90	0	+0.035	0	-0.054	85.100	85.267	9.5	30	40	60	80	100	
TPX90 x L	90	95	0	+0.035	0	-0.054	90.100	90.267	9.5	25	40	60	80	90	100
TPX95 x L	95	100	0	+0.035	0	-0.054	95.100	95.267	9.5	60	100				
TPX100 x L	100	105	0	+0.035	0	-0.054	100.100	100.267	9.5	50	60	80	95	115	
TPX105 x L	105	110	0	+0.035	0	-0.054	105.100	105.267	9.5	60	115				
TPX110 x L	110	115	0	+0.035	0	-0.054	110.100	110.267	9.5	60	110	115			
TPX115 x L	115	120	0	+0.035	0	-0.054	115.100	115.267	9.5	50	70				
TPX120 x L	120	125	0	+0.040	0	-0.054	120.100	120.272	9.5	60	100	110			
TPX125 x L	125	130	0	+0.040	0	-0.063	125.100	125.272	9.5	60	100	110			
TPX130 x L	130	135	0	+0.040	0	-0.063	130.130	130.280	no hole	50	60	80	100		
TPX135 x L	135	140	0	+0.040	0	-0.063	135.130	135.280	no hole	60	80				
TPX140 x L	140	145	0	+0.040	0	-0.063	140.130	140.280	no hole	50	60	80	100		
TPX145 x L	145	150	0	+0.040	0	-0.063	145.130	145.280	no hole	100					
TPX150 x L	150	155	0	+0.040	0	-0.063	150.130	150.280	no hole	50	60	80	100		
TPX160 x L	160	165	0	+0.040	0	-0.063	160.130	160.280	no hole	50	60	80	100		
TPX170 x L	170	175	0	+0.040	0	-0.063	170.130	170.280	no hole	50	60	80	100		
TPX180 x L	180	185	0	+0.046	0	-0.063	180.130	180.286	no hole	50	60	80	100		
TPX190 x L	190	195	0	+0.046	0	-0.072	190.130	190.286	no hole	50	60	80	100	120	
TPX200 x L	200	205	0	+0.046	0	-0.072	200.130	200.286	no hole	50	60	80	100	120	
TPX220 x L	220	225	0	+0.046	0	-0.072	220.130	220.286	no hole	50	60	80	100	120	
TPX240 x L	240	245	0	+0.046	0	-0.072	240.130	240.286	no hole	50	60	80	100	120	
TPX250 x L	250	255	0	+0.052	0	-0.072	250.130	250.292	no hole	50	60	80	100	120	
TPX260 x L	260	265	0	+0.052	0	-0.081	260.130	260.292	no hole	50	60	80	100	120	
TPX280 x L	280	285	0	+0.052	0	-0.081	280.130	280.292	no hole	50	60	80	100	120	
TPX300 x L	300	305	0	+0.052	0	-0.081	300.130	300.292	no hole	60	80	100	120		

Non-standard lengths can be supplied. If the size you require is not listed please contact our sales dept. We also offer a specialised machining service for low volume non-standard sizes and tolerances.

Bowman International Limited reserve the right to change specifications without prior notice E & OE

BOWMAN INTERNATIONAL LIMITED

10 Isis Court, Wyndyke Furlong, Abingdon Business Park, Abingdon, Oxfordshire, OX14 1DZ England

Tel +44 (0)1235 815816 Fax +44 (0)1235 811234 E-mail enquiries@bowman.co.uk Website www.bowman.co.uk



The company to turn to



LRQ 0960929



Washers. Metric. Acetal X Type

Reference	I.D.	O.D.	Washer Sizes						Dowell hole		Dowell hole	
			Bore		O.D.		Thickness		Diameter		PCD	
	(mm)		(mm)						(mm)		(mm)	
TXW12	12	24	12.00	12.25	23.75	24.00	1.487	1.577	1.625	1.875	17.88	18.12
TXW14	14	26	14.00	14.25	25.75	26.00	1.487	1.577	2.125	2.375	19.88	20.12
TXW16	16	30	16.00	16.25	29.75	30.00	1.487	1.577	2.125	2.375	21.88	22.12
TXW18	18	32	18.00	18.25	31.75	32.00	1.487	1.577	2.125	2.375	24.88	25.12
TXW20	20	36	20.00	20.25	35.75	36.00	1.487	1.577	3.125	3.375	27.88	28.12
TXW22	22	38	22.00	22.25	37.75	38.00	1.487	1.577	3.125	3.375	29.88	30.12
TXW24	24	42	24.00	24.25	41.75	42.00	1.487	1.577	3.125	3.375	32.88	33.12
TXW26	26	44	26.00	26.25	43.75	44.00	1.487	1.577	3.125	3.375	34.88	35.12
TXW28	28	48	28.00	28.25	47.75	48.00	1.487	1.577	4.125	4.375	37.88	38.12
TXW32	32	54	32.00	32.25	53.75	54.00	1.487	1.577	4.125	4.375	42.88	43.12
TXW38	38	62	38.00	38.25	61.75	62.00	1.487	1.577	4.125	4.375	49.88	50.12
TXW42	42	66	42.00	42.25	65.75	66.00	1.487	1.577	4.125	4.375	53.88	54.12
TXW48	48	74	48.00	48.25	73.75	74.00	2.510	2.600	4.125	4.375	60.88	61.12
TXW52	52	78	52.00	52.25	77.75	78.00	2.510	2.600	4.125	4.375	64.88	65.12

Non-standard lengths can be supplied. If the size you require is not listed please contact our sales dept. We also offer a specialised machining service for low volume non-standard sizes and tolerances.

Bowman International Limited reserve the right to change specifications without prior notice E & OE



Strip. Acetal X Type

Reference	Strip Sizes			
	Length	Width	Thickness	
	(mm)			
TXS10070	460	70	1.03	1.07
TXS15100	460	100	1.52	1.56
TXS20100	460	100	2.01	2.05
TXS25100	460	100	2.52	2.57



Non-standard lengths can be supplied. If the size you require is not listed please contact our sales dept. We also offer a specialised machining service for low volume non-standard sizes and tolerances.

Bowman International Limited reserve the right to change specifications without prior notice E & OE



The company to turn to



LRQ 0960929



Wrapped Imperial Plain Bearings. PTFE U Type

Reference	Bore		Recommended Tolerances				Bearing Size when fitted		Standard Length Options			
	(inch)		Housing (inch)		Shaft (inch)		Bore (inch)		Tolerance +/- 0.010"			
TFPI03TH x L	3/16	1/4	0.2497	0.2503	0.1858	0.1865	0.1867	0.1893	3/16	1/4	3/8	
TFPI04TH x L	1/4	5/16	0.3122	0.3128	0.2481	0.2490	0.2492	0.2518	1/4	3/8		
TFPI05TH x L	5/16	3/8	0.3747	0.3753	0.3106	0.3115	0.3117	0.3143	3/8	1/2		
TFPI06TH x L	3/8	15/32	0.4684	0.4691	0.3731	0.3740	0.3742	0.3769	3/8	1/2	5/8	3/4
TFPI07TH x L	7/16	17/32	0.5309	0.5316	0.4355	0.4365	0.4367	0.4394	1/2	3/4		
TFPI08TH x L	1/2	19/32	0.5934	0.5941	0.4980	0.4990	0.4992	0.5019	3/8	1/2	5/8	7/8
TFPI09TH x L	9/16	21/32	0.6559	0.6566	0.5605	0.5615	0.5617	0.5644	1/2	3/4		
TFPI10TH x L	5/8	23/32	0.7184	0.7192	0.6230	0.6240	0.6242	0.6270	1/2	5/8	3/4	7/8
TFPI11TH x L	11/16	25/32	0.7809	0.7817	0.6855	0.6865	0.6867	0.6895	7/8			
TFPI12TH x L	3/4	7/8	0.8747	0.8755	0.7479	0.7491	0.7493	0.7525	1/2	3/4	1	
TFPI14TH x L	7/8	1	0.9997	1.0005	0.8729	0.8741	0.8743	0.8775	3/4	7/8	1	
TFPI16TH x L	1	1 1/8	1.1246	1.1256	0.9979	0.9991	0.9992	1.0026	3/4	1	1 1/4	1 1/2
TFPI18TH x L	1 1/8	1 9/32	1.2808	1.2818	1.1226	1.2380	1.1240	1.1278	3/4	1		
TFPI20TH x L	1 1/4	1 13/32	1.4058	1.4068	1.2472	1.2488	1.2490	1.2528	3/4	1	1 1/4	1 3/4
TFPI22TH x L	1 3/8	1 17/32	1.5308	1.5318	1.3722	1.3738	1.3740	1.3778	1	1 3/8	1 3/4	
TFPI24TH x L	1 1/2	1 21/32	1.6558	1.6568	1.4972	1.4988	1.4990	1.5028	1	1 1/4	1 1/2	2
TFPI26TH x L	1 5/8	1 25/32	1.7808	1.7818	1.6222	1.6238	1.6240	1.6278	1	1 1/2		
TFPI28TH x L	1 3/4	1 15/16	1.9371	1.9381	1.7471	1.7487	1.7489	1.7535	1	1 1/2	1 3/4	2
TFPI30TH x L	1 7/8	2 1/16	2.0621	2.0633	1.8721	1.8737	1.8739	1.8787	1	1 7/8	2 1/4	
TFPI32TH x L	2	2 3/16	2.1871	2.1883	1.9969	1.9987	1.9989	2.0037	1	1 1/2	2	2 1/2
TFPI36TH x L	2 1/4	2 7/16	2.4365	2.4377	2.2489	2.5070	2.2509	2.2573	2	2 1/4	2 1/2	3
TFPI40TH x L	2 1/2	2 11/16	2.6869	2.6881	2.4993	2.5011	2.5013	2.5077	2	2 1/2	3	3 1/2
TFPI44TH x L	2 3/4	2 15/16	2.9358	2.9370	2.7482	2.7500	2.7502	2.7566	2	2 1/2	3	3 1/2
TFPI48TH x L	3	3 3/16	3.1858	3.1872	2.9982	3.0000	3.0002	3.0068	2	3	3 1/4	
TFPI56TH x L	3 1/2	3 11/16	3.6858	3.6872	3.4978	3.5000	3.5002	3.5068	2 1/2	3	3 3/4	
TFPI64TH x L	4	4 3/16	4.1858	4.1872	3.9978	4.0000	4.0002	4.0068	3	3 3/4	4 3/4	
TFPI80TH x L	5	5 3/16	5.1844	5.1860	4.9961	4.9986	4.9988	5.0056	3	3 3/4		
TFPI96TH x L	6	6 3/16	6.1858	6.1874	5.9975	6.0000	6.0002	6.0070	3	3 3/4		
TFPI112TH x L	7	7 3/16	7.1812	7.1830	6.9929	6.9954	6.9956	7.0026	3 3/4			

Non-standard lengths can be supplied. If the size you require is not listed please contact our sales dept. We also offer a specialised machining service for low volume non-standard sizes and tolerances.

Bowman International Limited reserve the right to change specifications without prior notice E & OE

BOWMAN INTERNATIONAL LIMITED

10 Isis Court, Wyndyke Furlong, Abingdon Business Park, Abingdon, Oxfordshire, OX14 1DZ England

Tel +44 (0)1235 815816 Fax +44 (0)1235 811234 E-mail enquiries@bowman.co.uk Website www.bowman.co.uk



The company to turn to



LRQ 0960929



Washers. Imperial. PTFE U Type

Reference	I.D.	O.D.	Washer Sizes						Dowell hole		Dowell hole	
	(inch)	(inch)	Bore		O.D.		Thickness		Diameter		PCD	
			(inch)	(inch)	(inch)	(inch)	(inch)	(inch)	(inch)	(inch)		
TFWTH06	0.500	0.875	0.500	0.510	0.865	0.875	0.061	0.063	0.067	0.077	0.682	0.692
TFWTH07	0.562	1.000	0.562	0.572	0.990	1.000	0.061	0.063	0.067	0.077	0.776	0.786
TFWTH08	0.625	1.125	0.625	0.635	1.115	1.125	0.061	0.063	0.099	0.109	0.870	0.880
TFWTH09	0.687	1.187	0.687	0.697	1.177	1.187	0.061	0.063	0.099	0.109	0.932	0.942
TFWTH10	0.750	1.250	0.750	0.760	1.240	1.250	0.061	0.063	0.099	0.109	0.995	1.005
TFWTH11	0.812	1.375	0.812	0.822	1.365	1.375	0.061	0.063	0.099	0.109	1.089	1.099
TFWTH12	0.875	1.500	0.875	0.885	1.490	1.500	0.061	0.063	0.130	0.140	1.182	1.192
TFWTH14	1.000	1.750	1.000	1.010	1.740	1.750	0.061	0.063	0.130	0.140	1.370	1.380
TFWTH16	1.125	2.000	1.125	1.135	1.990	2.000	0.061	0.063	0.161	0.171	1.557	1.567
TFWTH18	1.250	2.125	1.250	1.260	2.115	2.125	0.061	0.063	0.161	0.171	1.682	1.692
TFWTH20	1.375	2.250	1.375	1.385	2.240	2.250	0.061	0.063	0.161	0.171	1.807	1.817
TFWTH22	1.500	2.500	1.500	1.510	2.490	2.500	0.061	0.063	0.192	0.202	1.995	2.005
TFWTH24	1.625	2.625	1.625	1.635	2.615	2.625	0.061	0.063	0.192	0.202	2.120	2.130
TFWTH26	1.750	2.750	1.750	1.760	2.740	2.750	0.061	0.063	0.192	0.202	2.245	2.255
TFWTH28	2.000	3.000	2.000	2.010	2.990	3.000	0.091	0.093	0.192	0.202	2.495	2.505
TFWTH30	2.125	3.125	2.125	2.135	3.115	3.125	0.091	0.093	0.192	0.202	2.620	2.630
TFWTH32	2.250	3.250	2.250	2.260	3.240	3.250	0.091	0.093	0.192	0.202	2.745	2.755

Non-standard lengths can be supplied. If the size you require is not listed please contact our sales dept. We also offer a specialised machining service for low volume non-standard sizes and tolerances.

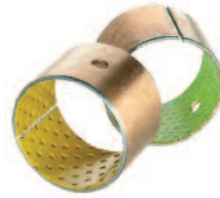
Bowman International Limited reserve the right to change specifications without prior notice E & OE

BOWMAN INTERNATIONAL LIMITED

10 Isis Court, Wyndyke Furlong, Abingdon Business Park, Abingdon, Oxfordshire, OX14 1DZ England
 Tel +44 (0)1235 815816 Fax +44 (0)1235 811234 E-mail enquiries@bowman.co.uk Website www.bowman.co.uk



The company to turn to



LRQ 0960929



Wrapped Imperial Plain. Acetal X Type

Reference	I.D.	O.D.	Recommended Tolerances				Bearing Size when fitted		Oil hole	Standard Length Options				
	Nominal		Housing		Shaft	Bore		Diameter	Tolerance +/- 0.010"					
	(inch)		(inch)				(inch)		(inch)	(inch)				
TFPI06TX x L	$\frac{3}{8}$	$\frac{15}{32}$	0.4694	0.4687	0.3648	0.3639	0.3694	0.3667	$\frac{5}{32}$	$\frac{3}{8}$	$\frac{1}{2}$	$\frac{3}{4}$		
TFPI07TX x L	$\frac{7}{16}$	$\frac{17}{32}$	0.5319	0.5312	0.4273	0.4263	0.4319	0.4292	$\frac{5}{32}$	$\frac{1}{2}$	$\frac{3}{4}$			
TFPI08TX x L	$\frac{1}{2}$	$\frac{19}{32}$	0.5944	0.5937	0.4897	0.4887	0.4944	0.4917	$\frac{5}{32}$	$\frac{3}{8}$	$\frac{1}{2}$	$\frac{5}{8}$	$\frac{7}{8}$	
TFPI09TX x L	$\frac{9}{16}$	$\frac{21}{32}$	0.6569	0.6562	0.5522	0.5512	0.5569	0.5542	$\frac{5}{32}$	$\frac{1}{2}$	$\frac{3}{4}$			
TFPI10TX x L	$\frac{5}{8}$	$\frac{23}{32}$	0.7195	0.7187	0.6146	0.6136	0.6195	0.6167	$\frac{5}{32}$	$\frac{1}{2}$	$\frac{5}{8}$	$\frac{3}{4}$	$\frac{7}{8}$	
TFPI11TX x L	$\frac{11}{16}$	$\frac{25}{32}$	0.7820	0.7812	0.6770	0.6760	0.6820	0.6792	$\frac{5}{32}$	$\frac{7}{8}$				
TFPI12TX x L	$\frac{3}{4}$	$\frac{7}{8}$	0.8758	0.8750	0.7390	0.7378	0.7444	0.7412	$\frac{5}{32}$	$\frac{1}{2}$	$\frac{3}{4}$	1		
TFPI14TX x L	$\frac{7}{8}$	1	1.0008	1.0000	0.8639	0.8627	0.8694	0.8662	$\frac{1}{4}$	$\frac{3}{4}$	$\frac{7}{8}$	1		
TFPI16TX x L	1	$1\frac{1}{8}$	1.1258	1.1250	0.9888	0.9876	0.9944	0.9912	$\frac{1}{4}$	$\frac{3}{4}$	1	$1\frac{1}{2}$		
TFPI18TX x L	$1\frac{1}{8}$	$1\frac{9}{32}$	1.2822	1.2812	1.1138	1.1126	1.1202	1.1164	$\frac{1}{4}$	$\frac{3}{4}$	1			
TFPI20TX x L	$1\frac{1}{4}$	$1\frac{13}{32}$	1.4072	1.4062	1.2387	1.2371	1.2452	1.2414	$\frac{1}{4}$	$\frac{3}{4}$	1	$1\frac{1}{4}$	$1\frac{3}{4}$	
TFPI22TX x L	$1\frac{3}{8}$	$1\frac{17}{32}$	1.5322	1.5312	1.3635	1.3619	1.3702	1.3664	$\frac{1}{4}$	1	$1\frac{3}{8}$	$1\frac{3}{4}$		
TFPI24TX x L	$1\frac{1}{2}$	$1\frac{21}{32}$	1.6572	1.6562	1.4884	1.4868	1.4952	1.4914	$\frac{5}{16}$	1	$1\frac{1}{4}$	$1\frac{1}{2}$	2	
TFPI26TX x L	$1\frac{5}{8}$	$1\frac{25}{32}$	1.7822	1.7812	1.6133	1.6117	1.6202	1.6164	$\frac{5}{16}$	1	$1\frac{1}{2}$			
TFPI28TX x L	$1\frac{3}{4}$	$1\frac{15}{16}$	1.9385	1.9375	1.7393	1.7367	1.7461	1.7415	$\frac{5}{16}$	1	$1\frac{1}{2}$	$1\frac{3}{4}$	2	
TFPI30TX x L	$1\frac{7}{8}$	$2\frac{1}{16}$	2.0637	2.0625	1.8632	1.8616	1.8713	1.8665	$\frac{5}{16}$	1	$1\frac{7}{8}$	$2\frac{1}{4}$		
TFPI32TX x L	2	$2\frac{3}{16}$	2.1887	2.1875	1.9881	1.9863	1.9963	1.9915	$\frac{5}{16}$	1	$1\frac{1}{2}$	2	$2\frac{1}{2}$	
TFPI36TX x L	$2\frac{1}{4}$	$2\frac{7}{16}$	2.4387	2.4375	2.2378	2.2360	2.2463	2.2415	$\frac{5}{16}$	2	$2\frac{1}{4}$	$2\frac{1}{2}$		
TFPI40TX x L	$2\frac{1}{2}$	$2\frac{11}{16}$	2.6887	2.6875	2.4875	2.4857	2.4963	2.4915	$\frac{5}{16}$	2	$2\frac{1}{2}$			
TFPI44TX x L	$2\frac{3}{4}$	$2\frac{15}{16}$	2.9387	2.9395	2.7351	2.7333	2.7457	2.7393	$\frac{5}{16}$	2	$2\frac{1}{2}$	3	$3\frac{1}{2}$	
TFPI48TH x L	3	$3\frac{3}{16}$	3.1889	3.1875	3.9849	3.9831	2.9959	2.9893	$\frac{3}{8}$	2	3	$3\frac{3}{4}$		
TFPI56TH x L	$3\frac{1}{2}$	$3\frac{11}{16}$	3.6889	3.6875	3.4844	3.4822	3.4959	3.4893	$\frac{3}{8}$	$2\frac{1}{2}$	3	$3\frac{3}{4}$		
TFPI64TH x L	4	$4\frac{3}{16}$	4.1889	4.1872	4.9839	4.9817	3.9959	3.9893	$\frac{3}{8}$	3	$3\frac{3}{4}$	$4\frac{3}{4}$		

Non-standard lengths can be supplied. If the size you require is not listed please contact our sales dept. We also offer a specialised machining service for low volume non-standard sizes and tolerances.

Bowman International Limited reserve the right to change specifications without prior notice E & OE

BOWMAN INTERNATIONAL LIMITED

10 Isis Court, Wyndyke Furlong, Abingdon Business Park, Abingdon, Oxfordshire, OX14 1DZ England

Tel +44 (0)1235 815816 Fax +44 (0)1235 811234 E-mail enquiries@bowman.co.uk Website www.bowman.co.uk